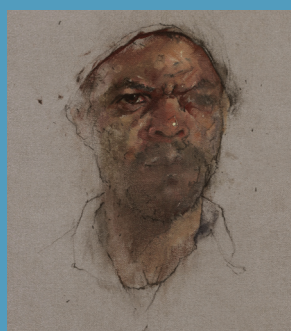
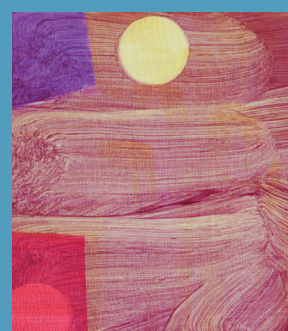


CALL FOR ENTRIES 2012

ING DISCERNING eye EXHIBITION



The ING Discerning Eye Exhibition is a show of small works independently selected by six prominent figures from different areas of the art world: two artists, two collectors and two critics. Work is selected from open submission and also from artists invited by the individual selectors. Each section is hung separately to emphasise its own distinctive identity. The impression emerges of six small exhibitions within the whole. It provides an unusual opportunity for works by lesser-known artists to be hung alongside contributions from internationally recognised names. The selectors are solely responsible for their own selection. The only restrictions are limitation of size and to select at least 25% of their section from the open submission.

Deadline for entries is in London on 7 and 8 September 2012.

LONDON OLYMPICS 2012

PLEASE NOTE: The Mall Galleries is located on the edge of an Olympic zone, as a result this may effect access for delivery and collection of work. We apologise in advance for any inconvenience caused.

Entry forms and information can be downloaded from www.parkerharris.co.uk

Enquires - competition administrators:
t: 01372 462190 or e: de@parkerharris.co.uk

PARKER HARRIS

2012 SELECTORS

ARTISTS

Albert Irvin RA

Chantal Joffe

COLLECTORS

Doris Lockhart

Gerald Walker

CEO, ING Commercial Banking UK, Ireland & Middle East

CRITICS

Charles Darwent

Writer and Art Critic, The Independent on Sunday

Skye Sherwin

Writer and Art Critic, The Guardian

PRIZES

ING Purchase Prize
£5000

Discerning Eye Founder's Purchase Prize
In honour of Michael Reynolds
£2500

ING Staff Purchase Prize
£1000

Discerning Eye Chairman's Purchase Prize
£1000

Meynell Fenton Prize
£1000

Benton Purchase Prize
£1000

Artspan Purchase Prize
£1000

Hicks Purchase Prize
£1000

Humphreys Purchase Prize
£750

Lincoln Seligman Purchase Prize
£500

Regional Entry Prizes
There will be up to 8 prizes of £250 each awarded to an outstanding entry in the national regions.

SPONSOR

ING Commercial Banking in the UK is delighted to sponsor the ING Discerning Eye Exhibition again in 2012. This continues a relationship which goes back to 1999. ING is proud to support one of the most important independent exhibitions in the UK and appreciates The Discerning Eye’s commitment to individuality, excellence and increasing opportunities for artists across the UK. ING Commercial Banking is responsible for providing financial products and services to corporate and institutional clients across Europe, the Americas and Asia. Headquartered in Amsterdam, ING Group is one of the world’s largest financial institutions, providing a wide range of financial services.

FRIENDS AND MEMBERS OF THE DISCERNING EYE

The Discerning Eye has a membership scheme for artists, and a Friends’ scheme for all other interested parties. Membership costs £45 per year, which includes free submission for up to six works to the main exhibition in November. It does not guarantee that your work will be chosen and hung in the exhibition, but for non-members, the price of submitting six works is currently £60. There are also additional benefits including two newsletters a year and private view tickets.

For further information and membership application forms please go to The Discerning Eye website www.discerningeye.org. Membership forms are also included in all Entry Packs and can also be downloaded from www.parkerharris.co.uk.

Discerning Eye announces a new partnership with Artspan Contemporary Art, leading provider of websites for artists. Artspan provides ready made website designs, enabling artists to promote their work in a simple and low cost way. DE Members are offered a substantial discount. See www.discerningeye.org or for more information contact info@discerningeye.org. Artspan will be sponsoring this year’s Artists’ Private View and is generously giving a £1,000 purchase prize.

2011 EXHIBITION

Of the 611 works on show in the 2011 Discerning Eye Exhibition 264 (43%) were from the open submission artists. A total of 175 works sold, of which 107 (61%) were by open submission artists.

2012 EXHIBITION

The Mall Galleries, The Mall, London SW1
15 November - 25 November 2012
Admission Free
Around 600 works will be on show in the exhibition. All selected artists will be invited to a Private View on 15 November 2012.

HOW TO ENTER

Artists are invited to submit up to 6 works. All artists must read and acknowledge the Rules & Conditions of Entry before submitting work. Entry schedules and labels are available to download from www.parkerharris.co.uk or www.discerningeye.org or by sending a SAE to: The ING Discerning Eye Exhibition c/o Parker Harris, PO Box 279, Esher, Surrey KT10 8YZ. Entry Schedules should be submitted along with submission fees and relevant labelled works (unwrapped) to the Mall Galleries or to the regional collection points as detailed opposite. Works of art can only be accepted on the receiving days stated and should be delivered unwrapped, although corner / edge protection on paintings is permissible. Sculpture, ceramics etc should be sent in sturdy cardboard boxes, packed with sufficient packing material. Please do not bind the works with tape or string.

RULES & CONDITIONS OF ENTRY

All artists must read and acknowledge the Rules & Conditions of Entry before submitting work.

- The ING Discerning Eye Exhibition is open to artists born or resident in the UK only.
- All works must be for sale.
- All works must be within the maximum size limit of 20 inches (50 cm).
- All works must be an original creation by the artist (prints, photographs and sculptures are acceptable.)
- All entries must be accompanied by a fully completed, signed Entry Schedule and a fully completed Discerning Eye label.

Submission Fees
The submission fee is £10 per work to be paid at the time of delivery. This can be paid by cash or by cheque. Cheques should be made payable to ‘The Discerning Eye Ltd’.

Maximum Size of Work
2D – 20” x 20” (50 x 50 cm) including frame
3D – 20” x 20” x 20” (50 x 50 x 50 cm) including base/stand
These sizes refer to the exterior frame size or in the case of sculpture the longest lateral or overall vertical measurement. Work exceeding these dimensions will be rejected.

Frames
All works on paper must be securely framed. Frames should be stout enough to accept a small screw or nail in the back for hanging purposes. Fixings are not required, if selected for exhibition mirror plates will be supplied and used by the organisers. There should be no projections of any kind whatsoever from the back of the frames to avoid damage to other works. Metal frames, glazed works with unprotected glass edges and non-reflective glass are all inadmissible. Frames and mounts of unusual colour, size or design may prejudice the selectors’ judgement.

Insurance
The Discerning Eye makes no provision for individual insurance of works and all artists submitting work for exhibition are strongly advised to make their own arrangements in this regard.

Copyright
Copyright of all works remains the property of the artist. Any enquiries for copyright will be referred to the artist.

Care of works
i. The responsibility for loss or damage, however caused, is the responsibility of artists, who are therefore advised to arrange adequate insurance cover against these risks.

ii. In the event of any dispute arising as to any discrepancy whether perceived or real between the sale price specified on the Entry Schedule and any final sale price, The Discerning Eye reserves the right to refer the matter to an independent expert arbitrator whose decision shall be in full and final settlement of any and all claims by either party subject to the limitations as to the liability of The Discerning Eye contained in paragraph i. herein.

NOTIFICATION OF THE SELECTORS’ DECISIONS

Artists will be notified of the results of their entry, with Part 2 of the Entry Schedule. A list of those artists selected for exhibition will also be on the Parker Harris website from Thursday 13 September 2012: www.parkerharris.co.uk. If you have not received notification by Thursday 13 September and you do not have internet access please contact Parker Harris on 01372 462190. The selectors’ decisions are final and no correspondence will be entered into.

COLLECTION OF UNSELECTED WORK

All unselected works must be collected from the Federation of British Artists, 17 Carlton House Terrace, London SW1Y 5BD on Friday 14 or Saturday 15 September 2012, between 10am -5pm. Works that remain uncollected will be removed from the Mall Galleries and taken into storage and will be liable for storage charges. The storage and collection address is: Nationwide Self Storage, Blantyre Street, London, SW10 0EQ. Collection of these stored works will be available on Wednesday 19 September and Wednesday 26 September (11am - 4pm) and charges of £8 per work/ per week will apply. Following these dates collection will then be by appointment only and charges of £10 per work/ per week will apply. PLEASE NOTE: works not collected by Monday 31 December 2012 will be disposed of. For further details please contact Art Moves of Chelsea directly, 020 7352 7492 or artmoveschelsea@aol.com.

SALE OF WORKS

ALL WORKS MUST BE FOR SALE. A commission of 40% + VAT shall be charged by The Discerning Eye on the price paid for work or work commissioned at the exhibition or as a result of introductions arranged by The Discerning Eye. The Discerning Eye is a non-profit making organisation and any monies received go towards the next exhibition. Any sales effected by The Discerning Eye will have priority over a sale effected by the artist. Artists should include this commission of 40% + VAT in the price of the work described in the Entry Schedule. If registered for VAT it is the artist’s responsibility to declare and include this sum at the standard rate at the same price. The price entered on the Schedule will be the catalogue selling price so please enter the figures carefully and accurately.

ONLINE SALES

All works in the ING Discerning Eye Exhibition will be included in The Discerning Eye’s online version of the catalogue. Work not sold at the exhibition will remain for sale on the website until 31 December 2012. Artists accepted for exhibition will be asked to provide a digital image of their work and a short biography for inclusion on The Discerning Eye website.

PHOTOGRAPHS

The artist accepts and agrees that all works in the exhibition may be photographed and/or reproduced for: the catalogue, press, publicity, promotion and advertising of The Discerning Eye and/or its activities and/or its exhibitions (including its online version of the catalogue) in all territories in perpetuity.

COLLECTION OF UNSOLD WORKS

If selected for exhibition, unsold works will be available for collection from the Federation of British Artists, 17 Carlton House Terrace, London, SW1Y 5BD, on Friday 30 November 2012, 10am - 5pm. Works not collected by this date will be removed by Art Moves of Chelsea and taken into storage. Charges of £10 per work/ per week will apply. Collection will be by appointment only, we will contact you nearer the time to provide you with further information.

DISCERNING EYE DRAWING BURSARY

Once again we will be running the Discerning Eye Drawing Bursary. For more information and to apply online visit www.parkerharris.co.uk or contact de@parkerharris.co.uk

COLLECTION POINTS AND DATES	
The submission fee is £10 per work to be paid at the time of delivery. This can be paid by cash or by cheque. Cheques should be made payable to ‘The Discerning Eye Ltd’.	
London	Friday 7 & Saturday 8 September 2012 10am – 5pm, Federation of British Artists (rear of the Mall Galleries), 17 Carlton House Terrace, London, SW1Y 5BD
Delivery of work through a regional collection point will be £8 (inclusive of VAT) per work. All fees are due at the point of submission.	
Aberdeen	Saturday 1 September 2012 11am- 12.30pm, Kings College, Regent Walk, Aberdeen, AB24 3FX. Return service and collections enroute available between all Picture Post collection points, contact carrier direct for further details. Carrier: Picture Post, 07833450788 or 01302 711011 or picturepost@btinternet.com
Belfast	Monday 3 September 2012 11am - 1pm, Car park on Academy Street, BT1, near the University of Ulster Campus, Belfast. Carrier: Irish Art Courier- +353 (0) 63 84951 or +353 (0) 86 8170151 or info@irishartcourier.com . Return service available and other collection dates available by appointment.
Birmingham	Tuesday 4 September 2012 12noon – 3pm, Munciple Car Park off Edgbaston Road (in front of Midland Art Centre) Birmingham, B12 9QH. Return service available, contact carrier direct. Carrier: Art Moves of Chelsea, 0207 352 7492 or artmoveschelsea@aol.com
Bristol	Friday 7 September 2012 12noon - 3pm, RWA Forecourt, Queens Road, Clifton, Bristol. Carrier: Art Moves of Chelsea, for contact details see Birmingham.
Cardiff	Thursday 6 September 2012 4pm - 6pm, Llanover Arts Centre, Romily Road, Canton, Cardiff. Carrier: Art Moves of Chelsea, for contact details see Birmingham.
Doncaster	Monday 3 September 2012 3pm – 7pm, Pengarth, Dame Lane, Misson, DN10 6EB. Carrier: Picture Post, for contact details see Aberdeen.
Edinburgh	Saturday 1 September 2012 3pm – 4.30pm, Edinburgh College of Art, Lady Lawson Street car park, Edinburgh, EH3 9DF. Carrier: Picture Post, for contact details see Aberdeen.
Exeter	Thursday 6 September 2012 12noon - 1pm, Motto Motorway Services, Exeter (top end of Car Park) Carrier: South Hams Express 01803 551368 or dave.allen500@btinternet.com . Return service available plus collections direct to carrier in Torbay and en route also available. Please contact carrier for further details.
Glasgow	Sunday 2 September 2012 9.30am–11am, Adjacent to Glasgow School of Art, junction of Renfrew Street and Dalhousie Street, Glasgow, G3 6RQ. Carrier: Picture Post, for contact details see Aberdeen.
Kendal	Sunday 2 September 2012 2.30pm–3.30pm, Junction 36 of the M6. For exact details please contact carrier. Carrier: Picture Post, for contact details see Aberdeen.
Manchester	Sunday 2 September 2012 By appointment only, please contact carrier. Service areas around M60 & M62. Carrier: Picture Post, for contact details see Aberdeen.
Newcastle	Saturday 1 September 2012 10am- 11.30am, Newcastle College Rye Hill Campus car park off Scotswood Road, Newcastle, NE4 7SA. Carrier: Picture Post, for contact details see Aberdeen.
Norwich	Wednesday 5 September 2012 11am - 2pm, Outside Colman House, University of East Anglia, Earlham Road, Norwich, NR4 7TJ. Carrier: Art Moves of Chelsea, for contact details see Birmingham.
Penzance	Wednesday 5 September 2012 12noon- 1pm, Penzance Harbour car park. Carrier: South Hams Express, for contact details see Exeter.
Plymouth	Wednesday 5 September 2012 8am- 9am, Saltash Bridge Car Park (Devon side of the Bridge.) Carrier: South Hams Express, for contact details see Exeter.
Southampton	Thursday 6 September 2012 4pm-5pm, Opposite the car park of Sir John Barleycorn, Cadnam, Southampton, SO40 2NP (J1, M27) Carrier: South Hams Express, for contact details see Exeter.